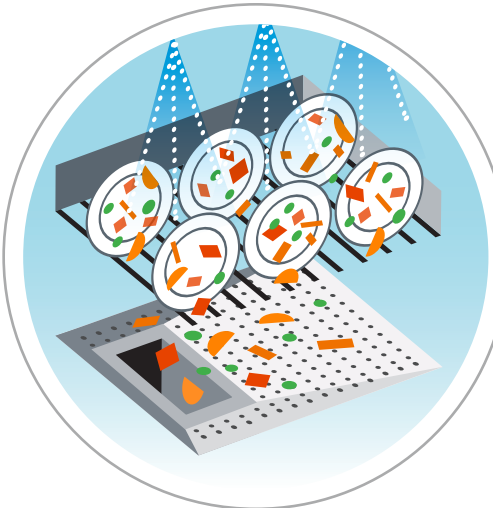
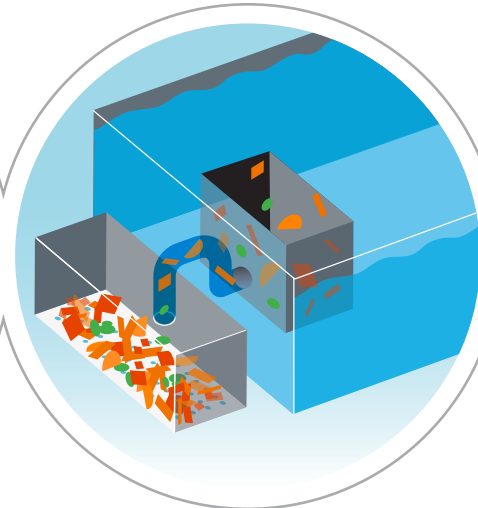




# AUTOMATIC SOIL REMOVAL TECHNOLOGY FOR SAVING WATER & LABOR



Heavy food soils are filtered during the wash cycle, allowing less pre-scraping.



Food soils are actively pumped from the wash tank so wash water stays cleaner, longer.



External scrap basket allows easy waste removal between washes.

## Reduce Wash Water Changes Up To 50%

Automatic Soil Removal (ASR) actively pumps food soil from the wash tank to keep wash water cleaner, longer, with fewer tank fills per day.

Save up to \$500 per year on water, energy, and chemicals, and reduce pre-scraping and machine cleaning labor time up to 20%.

## EXPERIENCE REAL WATER AND LABOR SAVINGS FOR YOUR OPERATIONS\*

<b>8,490</b> GALLONS OF WATER SAVED	<b>1,140<sup>Kwh</sup></b> ENERGY SAVINGS	<b>\$665</b> COST SAVINGS	CALL FOR A <b>FREE</b> TCO AUDIT
---	---	---------------------------------	--

\*Projected annual savings from ASR on CLN44 Advansys vs. Base running 550 racks/day and one less tank fill per day. Projected annual savings from AM16 ASR vs. Base running 250 racks/day and one less tank fill per day are up to \$190 (7,700 gallons water, 460 kWh).

To learn more about Hobart Commercial Dishwashing technologies, visit us at [hobartcorp.com/Technology](http://hobartcorp.com/Technology) or call us at **888 4HOBART**.



Available on AM16, CL & FT1000e

Hobart's best-in-class wash performance delivers our legendary Hobart Clean, removing more tough food soil to improve customer satisfaction & protect your reputation; and, our customer-inspired technologies help to cut labor time and save water, energy and chemicals for the lowest cost of ownership and greatest lifetime value.

